



APPLICATIONS

LED shoebox light is widely used in outdoor lighting, like urban roads, industrial areas, residential areas, sidewalks, squares, parks, schools, gardens, etc. Photocell Dimmable(Optional), more energy saving, ageing-resistant and up to 90% transmittance. High quality CREE LEDs.

Widely used for Parking Lot Lighting, Square Lighting, Roadway Lighting, Outdoor Area Lighting, High Mast Lighting, Area Lighting.

SPECIFICATION

Model	RMS-S-L2-XXXW
Wattage	100W/150W/200W/240W/300W
Luminous Flux	130LM/W
Beam Angle	TYPE3, TYPE4, TYPE5
Color Temperature	3000K~6000K
Input Voltage	AC100-277V, 50-60Hz
Life Hours	50,000
LED Brand	CREE 3030
CRI	Ra>80
PF	>0.9
Surge Voltage	4KV; 20KV optional
Operation Temperature	-35°C~55°C
IP Rating	IP65

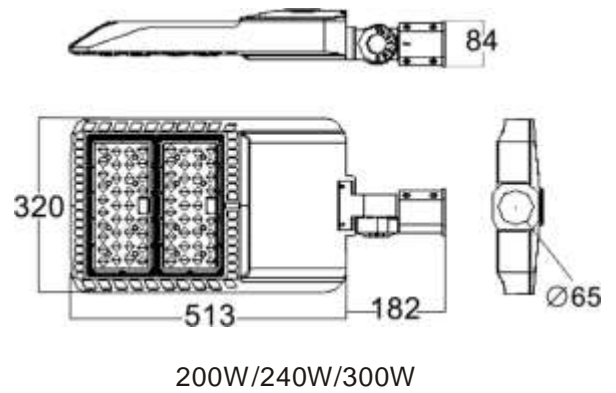
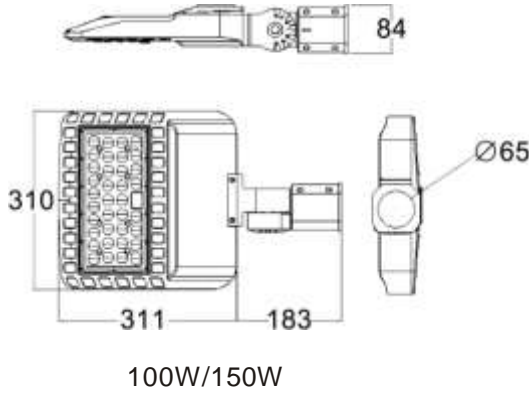
FEATURES

- *Use high bright CREE 3030, the luminous efficiency of whole lamp up to 130lm/W.
- *IP65 rated for wet location.
- *Photocell sensor and dimmable function for option.
- *4 kinds of mounting methods are available for different installation.
- *Offering 5 years warranty, over 50,000 hours lifetime.
- *Modular design allows for separation of components for best heat dissipation.
- *Die-cast and powder coated aluminum housing for better anti-corrosion.
- *ETL/DLC/CE/RoHS/LM79/LM80/IES for quality assurance and safe operation.



DIMENSIONS

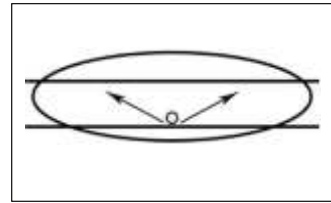
Unit: mm



BEAM ANGLE

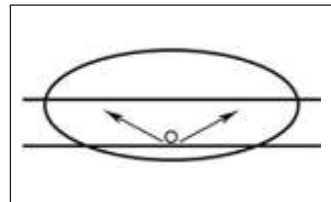
Type III

The Type III distribution is meant for roadway lighting, general parking areas and other areas where a larger area of lighting is required. Type III lighting needs to be placed to the side of the area, allowing the light to project outward and fill the area. This produces a filling light flow.



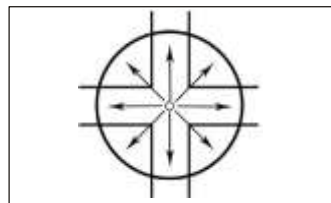
Type IV

The Type IV distribution produces a semicircular light meant for mounting on the sides of buildings and walls. It's best for illuminating the perimeter of parking areas and businesses.



Type V


The Type V distribution is intended for luminaire mounting at or near center of roadways, center islands of parkway, and intersections. It is also meant for large, commercial parking lot lighting as well as areas where sufficient, evenly distributed light is necessary.



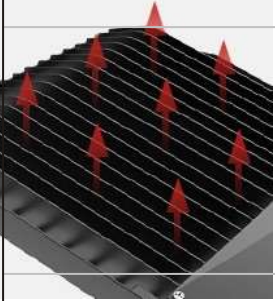
DETAILS




High bright light source, CREE LED, 130lm/w.



MEAN WELL branded LED driver, high reliable, 100-277VAC and 200-480VAC are supported.



Heat sink with fin design good for heat dissipation.



Die-cast and powder coated aluminium housing.



PHOTOCELL ENABLED
SAVE UP TO 80% ENERGY
PHOTOCELL SENSOR SHORTING CAP

Photocell sensor for dusk to dawn usage, can be bypassed with shorting cap if not needed.



Motion Sensor, can light up 100% when motion is detected within range

MOUNTING METHODS



Round Pole Bracket



Square Pole Bracket



Slip Fitter Bracket



York Bracket

INSTALLATION INSTRUCTIONS

***Warning: Do cut off electrical source in order to avoid electrical shock and endanger life-safety before installation.**

***Install height from floor higher than 1.2m.**

Step 1:

Start installation of the street light

Turn the street light to the back side, loose the 2 screws on the swivel

Step 2:

Connect the cables

Connect the L,N,GND cables on the lamp to the corresponding L,N,GND cables on the lamp pole.

Step 3:

Fixation of the LED Street Lights

Install the street light to the lamp pole, adjust the LED street light to be of horizontal level. Fasten the 2 screws on the swivel.

1.Slip Fitter

2.Trunnion

3.Arm

