

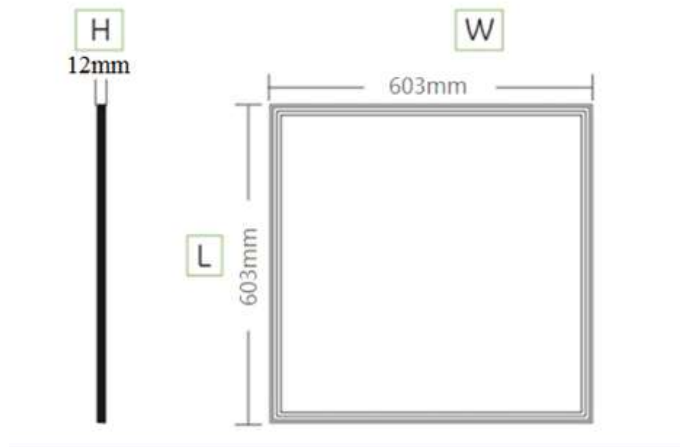
IP 65 LED EDGELIT PANEL

These panel is specially designed for Pharmaceutical and Clean Room applications. The fixtures are treated with anti-fungal, anti-bacterial electrophoretic coatings, which is a requirement for most Clean Rooms.

FEATURES AND BENEFITS

- Power Range: 18W to 80W
- Efficacy Range: 100 to 130 LM/W
- Wide range of CCT 3000K to 5000K
- Operating Temperature: -40°C to 50°C
- Tier-1 LED suppliers; LM80 rated at CRI >80
- 120V to 277V and 120V to 347V
- PF >0.90, THD ≤ 15%
- Emergency battery back up option
- 0-10V Dimming
- Standard 5 Year warranty
- Frame Color – white, silver anodizing
- Surface mount, recess mounting or hanging

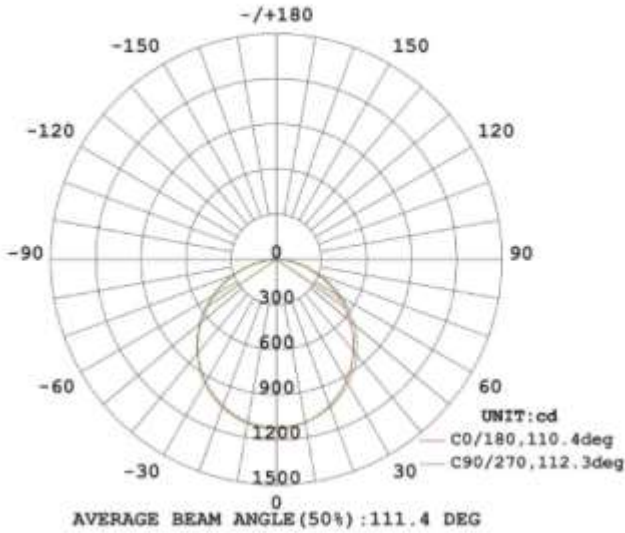
PHYSICAL DIMENSIONS



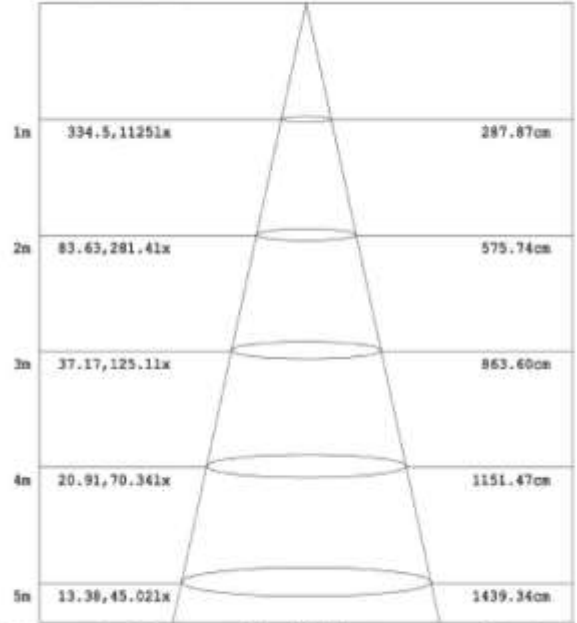
Size	POWER	CCT (K)/ CRI	Input Voltage	LM/W	Beam Angle
295 x 295 x 9 (mm)	12, 18, 20	3000K to 6500K 80/90	AC 85 - 265 V	100 To 120	120 deg
295 x 595 x 9 (mm)	18, 20, 36, 40	3000K to 6500K 80/90	AC 85 - 265 V	100 To 120	120 deg
620 x 629 x 9 (mm)	36, 40, 48, 54, 60, 72, 80	3000K to 6500K 80/90	AC 85 - 265 V	100 To 120	120 deg
295 x 1195 x 9 (mm)		3000K to 6500K 80/90	AC 85 - 265 V	100 To 120	120 deg
595 x 1195 x 9 (mm)	48, 54, 60, 72, 80	3000K to 6500K 80/90	AC 85 - 265 V	100 To 120	120 deg

PHOTOMETRICS

LUMINOUS INTENSITY DISTRIBUTION DIAGRAM



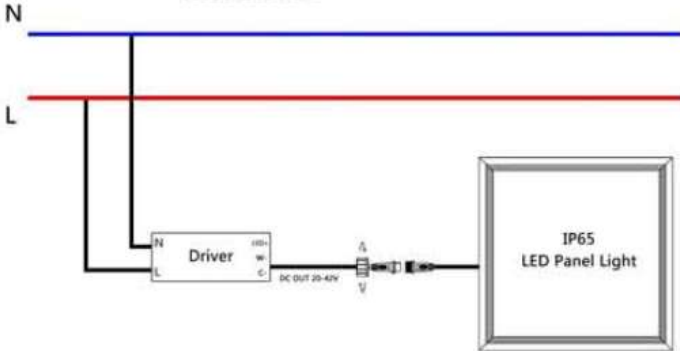
Flux out: 2310 lm

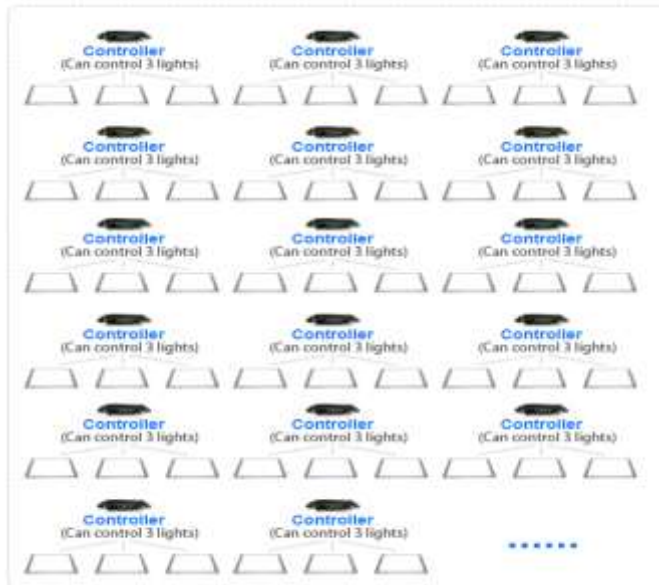
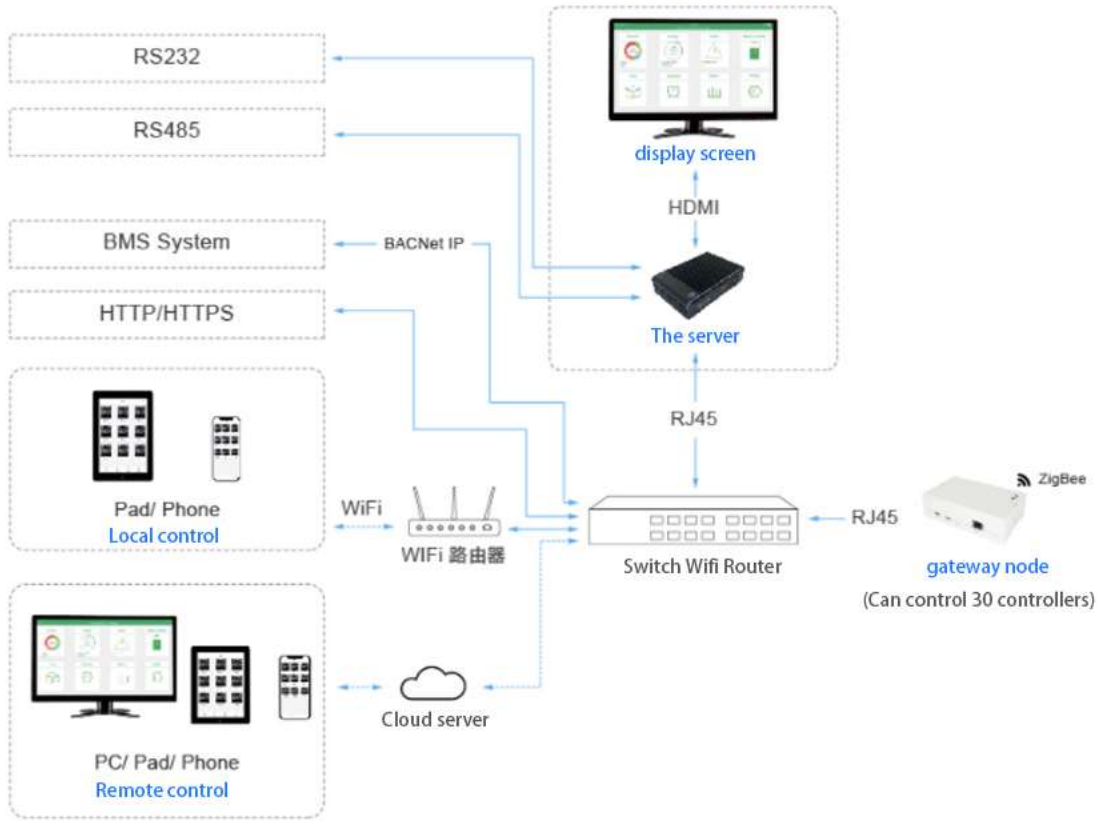


Note: The Curves indicate the illuminated area and the average illumination when the luminaire is at different distance.

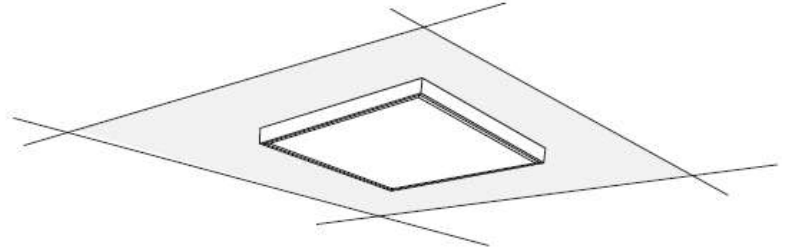
WIRING DIAGRAM

AC85-265V IN





CEILING MOUNTED WITH FRAME



BEFORE YOU BEG

Read these instructions completely and carefully.

⚠ WARNING/AVERTISSEMENT

RISK OF ELECTRIC SHOCK

- Turn power off before inspection, installation or removal.
- Properly ground electrical enclosure.

RISK OF FIRE

- Follow all NEC and local codes.
- Use only UL or IEC approved wire for input/output connections. Minimum size 18 AWG (0.75mm²).

RISQUES DE DÉCHARGES ÉLECTRIQUES

- Coupez l'alimentation avant d'inspecter, installer ou déplacer le luminaire.
- Assurez-vous de correctement mettre à la terre le boîtier d'alimentation électrique.

RISQUES D'INCENDIE

- Respectez tous les codes NEC et codes locaux.
- N'utilisez que des fils approuvés par UL ou IEC pour les entrées/sorties de connexion. Taille minimum 18 AWG (0.75mm²).

Prepare Electrical Wiring

Refer to **LED Panel Specification** for more lamp electrical data info.



Electrical Requirements

- The LED luminaire must be connected to the mains supply according to its ratings on the product label.



Grounding Instructions

- The grounding and bonding of the overall system shall be done in accordance to local electric code of the country where the luminaire is installed.

Save These Instructions

Use only in the manner intended by the manufacturer. If you have any questions, contact the manufacturer.

⚠ CAUTION

Do not perforate the integrity of the luminaire. Only screw into the threaded mounting bracket holes located at the four corners of the fixture.

⚠ WARNING/AVERTISSEMENT

Risk of Fire. Do not install insulation within 3 inches (76 mm) of luminaire top.
Risques d'incendie. Ne pas installer d'isolation à moins de 76 mm (3 pouces) au-dessus du luminaire.

Storage Info

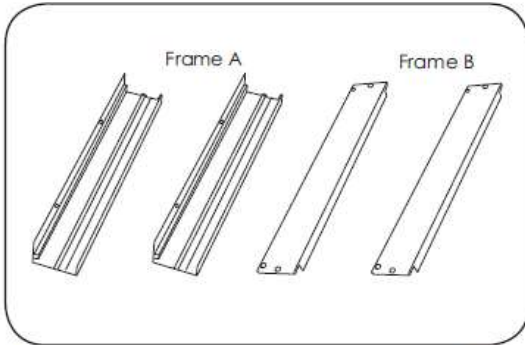
Environmental Operating Temperature Range	-10°C to +40°C
Environmental Rating	Dry or damp location rated
Environmental Storage Temperature Range	-40°C to +60°C

CEILING MOUNTED FRAME KITS

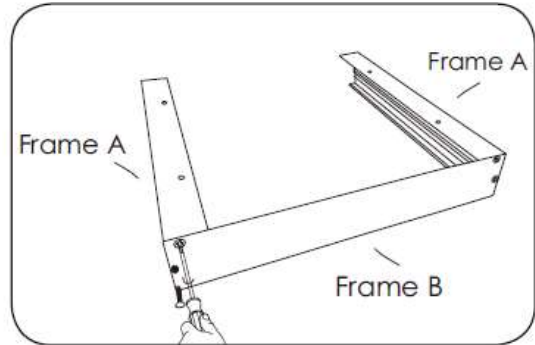
Accessories	3030	3060	6060	6262	30120	60120
Frame A 		X 2			X 2	
Frame B 		X 2			X 2	

Accessories	3030	3060	6060	6262	30120	60120
		X 8			X 8	
		X 4			X 6	

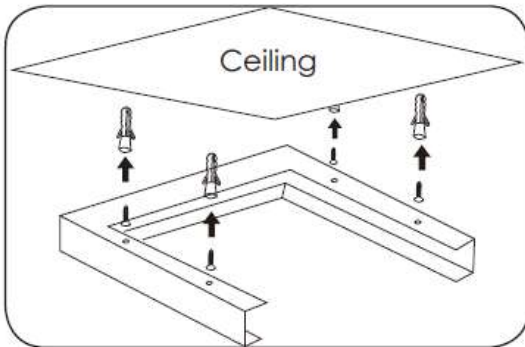
CEILING MOUNTED FRAME STEPS



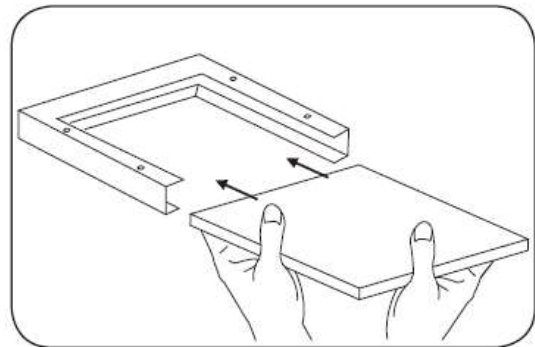
1 Identify the two frame types as illustrated above (Type A and B).



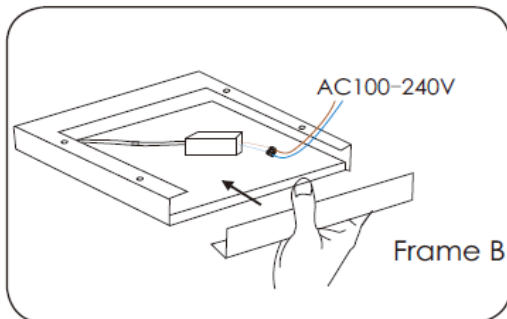
2 Fix the two 'A' frames together with one 'B' frame.



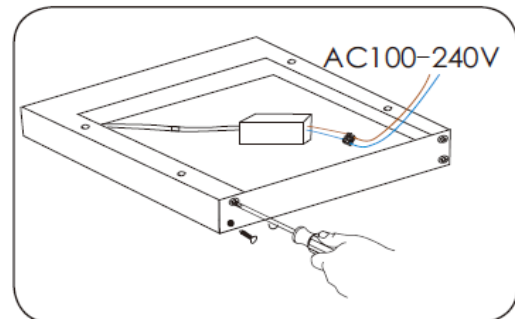
3 Mount the frame to the ceiling.



4 Slide the Panel in to the frame.

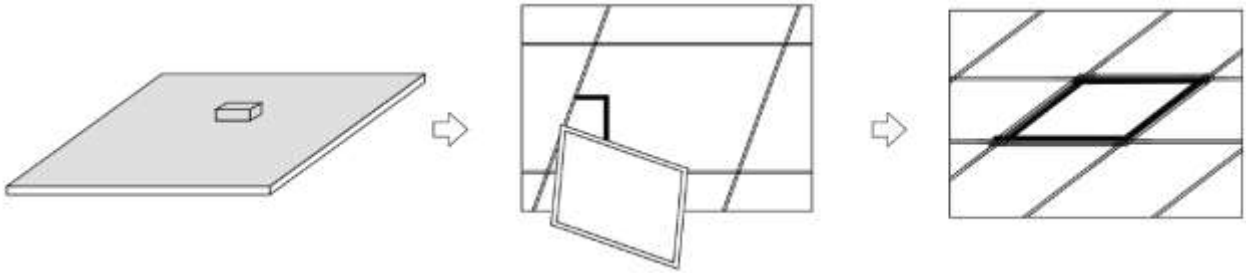


5 Insert the other 'B' frame on to the ends of the 'A' frames.



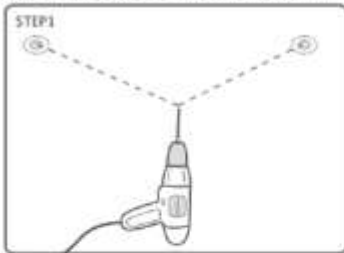
6 Affix the 'B' frame with the screws supplied.

RECESS MOUNTING

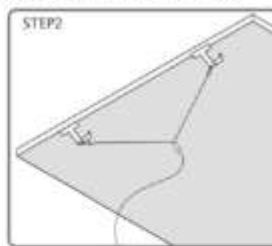


SUSPENDED

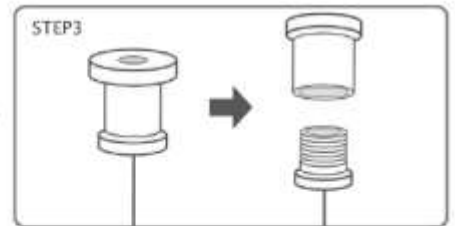
According to the width of the panel light, drill 2 mounting holes on the mounting position



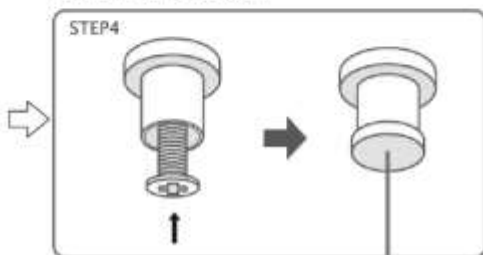
Button the panel light with the dog buckle of the equipped rope.



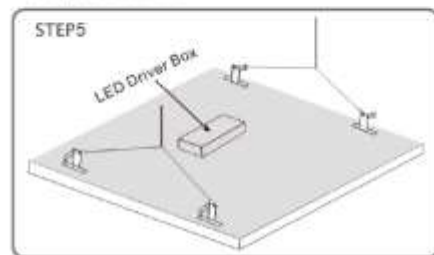
Twist off the rope grab device, and divide it into two parts: the upper cover and lower cover.

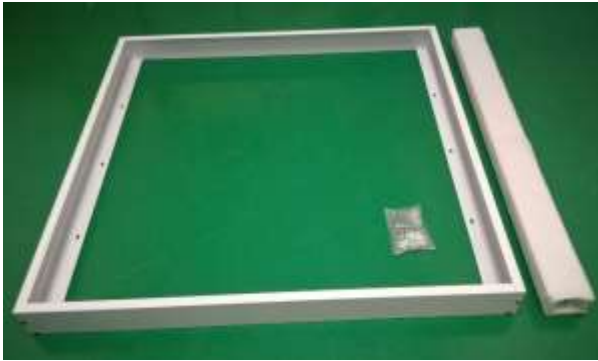


Fix the upper cover into prepared mounting holes with self-tapping screws (not included), and then twist on the lower cover.



Connect LED panel light by the hook of suspension wire





Installation frame thickness can be customized to customer requirements. Typical thickness is 50mm to accommodate for the drivers in case no junction box is present. If the driver can be placed in the junction box, then the frame can be made as small as 15mm thickness.

