



## APPLICATION

NLV Lighting Industrial Lighting Backlit Panel Lights luminaires are designed for a wide variety of applications for use in office buildings, retail shops, warehouses, manufacturing, gyms, and other industrial buildings. These fixtures are designed for 10 ft to 20 ft ceilings heights. The power and CCT tunability provides customers the option to use same fixture for multiple locations. A unique and intelligent IC control programmed driver provides consistent color mixing and protection of all electronics. All luminaires come with a high-quality diffuser providing added protection and glare control. These fixtures are energy-efficient replacements for linear fluorescent and HID fixtures.

## FEATURES

- Power Range: 20W to 60W
- Efficiency Range: 130 to 160 LM/W
- CCT tunable from 3000K- 4000K - 5000K
- Power Tunable from 20W to 60W
- Operating Temperature: -40oC to 50oC
- Tier-1 LED suppliers; LM80 rated at CRI >80
- 120V to 277V and 120V to 347V
- PF >0.90, THD ≤ 15%
- Emergency battery back up option
- Motion Sensing and Dimming
- Standard 5 Year warranty

## ORDERING GUIDE (REGULAR-SERIES)

**Example: NLV-BLP-R-VN-30W22-50K-277V-130LPW-DSE-WH**

Color Temperature (K)	Input Voltage (V)	Size (ft)	Power (W)	Options
<b>30K</b> - 3000K <b>40K</b> - 4000K <b>50K</b> - 5000K <b>57K</b> - 5700K	<b>277V</b> 120V – 277V <b>347V</b> 120V – 347V	2X2	25	<b>Dimming &amp; Sensing</b> <b>DDM</b> - Dimming <b>DDS</b> – Dimming + Sensing <b>DDE</b> – Dimming + Emergency <b>DSE</b> – Dimming + Sensing + Emergency <b>Color</b> <b>WH</b> –White <b>CC</b> –Custom Color
		1X4	30 35	
		2X4	40 50	

### ORDERING GUIDE (TUNABLE-SERIES)

Example:

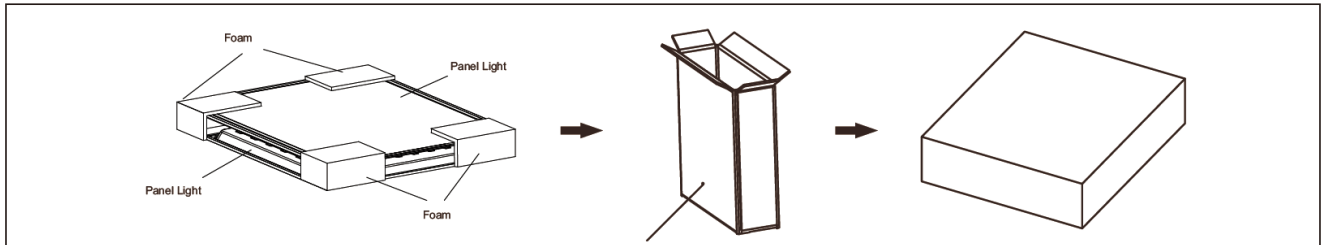
Power & CCT Tunable: NLV-BLP-T-VN-50W24-50K-277V-130LPW-DSE-WH

Wireless CCT Tunable: NLV-BLP-W-VN-35W22-50K-277V-130LPW-DSE-WH

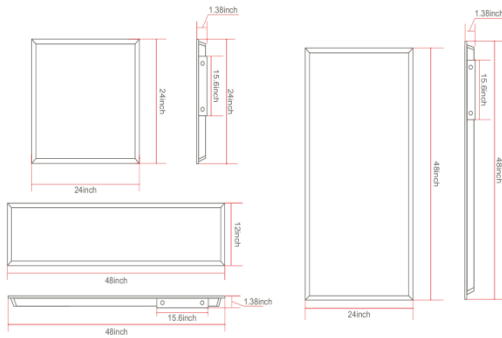
Color Temperature (K)	Input Voltage (V)	Size (ft)	Power (W)	Options
<b>30K</b> - 3000K <b>40K</b> - 4000K <b>50K</b> - 5000K <b>57K</b> - 5700K	<b>277V</b> 120V – 277V <b>347V</b> 120V – 347V	2X2	20	<b>Dimming &amp; Sensing</b> <b>DDM</b> - Dimming <b>DDS</b> – Dimming + Sensing <b>DDE</b> – Dimming + Emergency <b>DSE</b> – Dimming + Sensing + Emergency <b>Color</b> <b>WH</b> –White <b>CC</b> –Custom Color <b>NOTE:</b> 20-25-30-35 W series is available in 2x2 and 1x4 sizes 35-40-45-50W series is available in 2 x 4 size only
			25	
			30	
			35	
		1X4	35	
			40	
2X4	45			
	50			

### PACKAGING INFORMATION

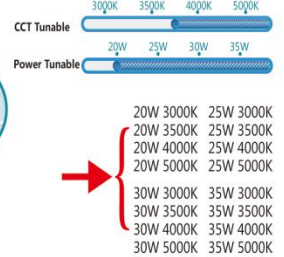
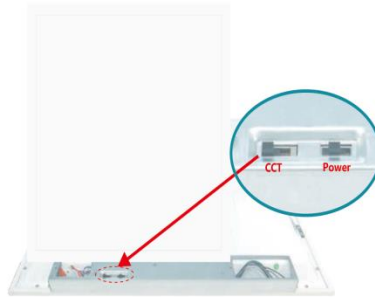
Item (inch)	N.W (lbs)	Carton Size (inch)	QTY/ctn(pcs)	G.W/ctn(lbs)	Qty loaded by 20GP	Qty loaded by 40GP	Qty loaded by 40HQ
24*24	5.07	25.39*3.94*25.59	2	11.5	1620 pcs	3264 pcs	4032 pcs
12*48	5.51	49.4*3.94*13.78	2	12.6	1544 pcs	3240 pcs	3774 pcs
24*48	9.26	49.4*3.94*25.59	2	20.5	800 pcs	1668 pcs	2070 pcs



### PHYSICAL DIMENSIONS



### PRODUCT SERIES

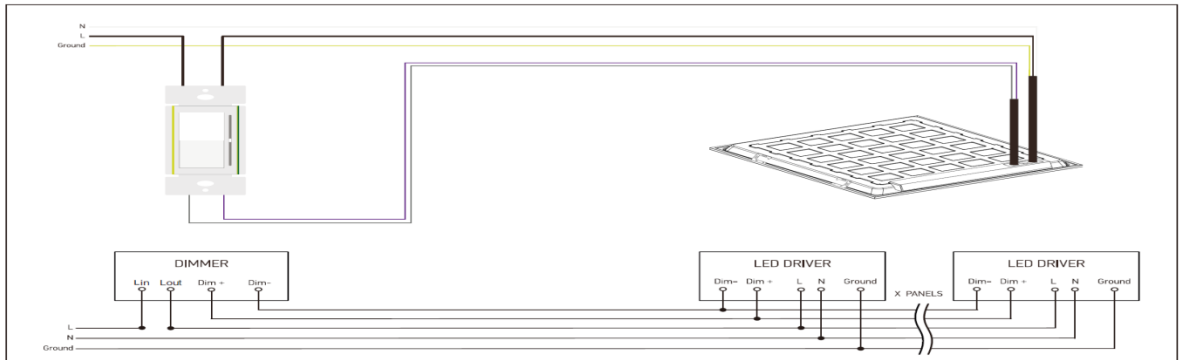


### THE WALL TYPE REMOTE CONTROLLER



	<b>Turn on</b> <b>Turn off</b>
	Wall-type remote controller can be used directly as a switch
	Long pressing (6-9 seconds) the button "ON" until the light goes out, the current brightness and color temperature are automatically saved. Turn off lights then turn on , the last saved brightness and color temperature will be displayed by default.
	Turn off the light to save the current color temperature then turn on the light , the last saved color temperature will be displayed by default.
	<b>Light code matching button</b> Pressing the 'ID' buttons simultaneously will keep the remote controller's indicator on, turn on the light and release the buttons after the light has been on for 2s completing the matching process. Matching code for several lights together is available.  If you need to use both handheld controller and wall controller for the same light, please don't use this function, directly use the following copy function.
	<b>Brightness adjuster</b>
	Press the 'CCT' button, the color temperature will cycle between 3000K/3500K/4000K/5000K. After shutting down/turning off the current color temperature will be saved.

### ELECTRICAL SCHEMATIC DIAGRAM

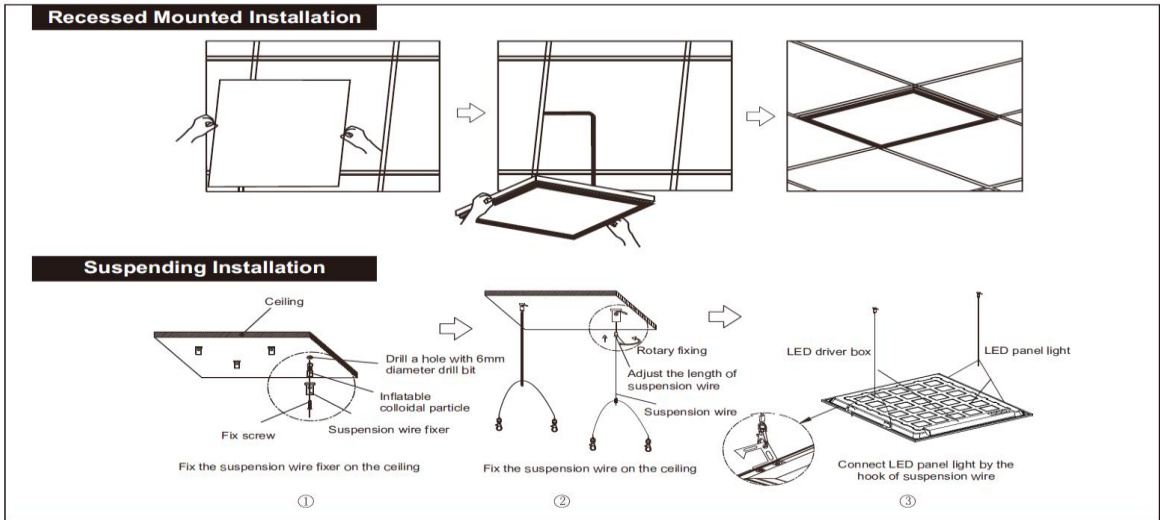


### INSTALLATION - SAFETY NOTICE

The installation of these fixtures shall be done by licensed and qualified contractors only. NLV Lighting shall not held liable for any personnel or property damage

- Turn power off before inspection, installation, or removal
- Properly ground all electrical enclosures
- Follow local codes and all NEC codes
- Use only UL or IEC approved Wires and other electrical accessories required
- Check the supply voltage and protect the lighting circuit by 15 -20A circuit breaker

### INSTALLATION:



### Surface Mounted Installation

