



## DESCRIPTION

- 5 years warranty from the shipping date
- Will replace all the failed products due to design/production quality during warranty period
- Will bear all cost of maintains if the customer can help us to repair locally
- Don't have the responsibility to compensate for any incorrect installation or artificial damage
- Don't have the responsibility to compensate for damage occurred during the transit.

## ADVANTAGE

- cETLus, DLC Premium
- CRI more than 80
- 0-10V dimmable driver
- Input voltage is AC100-277 V
- Reduces energy consumption up to 60%.
- 5 years warranty
- Surface mounting installation
- Photocell sensor option
- Special indoor luminaire design

## LOCATIONS

- Offices
- Warehouse
- Garage
- Shopping Mall
- School
- Other commercial applications

## APPLICATIONS

- Offices
- Corridor

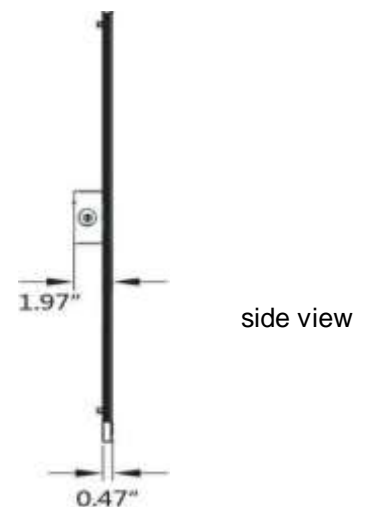
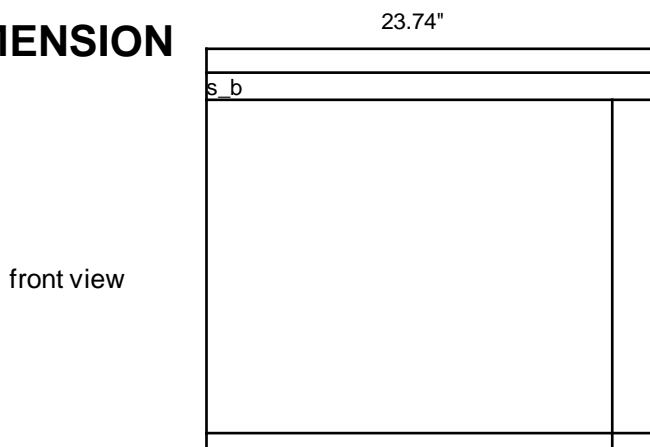
## TECHNICAL DETAILS

Product Number	Size	Power (W)	Dimensions	Color Temperature (K)	System Luminous Flux (lm)	System Efficacy (Lm/W)
DM-P72448W-40K-ZZ	2 x4ft	48	47.72" X23.74" x0.47"	4000K	6,240	130
DM-P72448W-50K-ZZ	2 x4ft	48	47.72" X23.74" x0.47"	5000K	6,240	130

## PHOTOMETRIC DATA

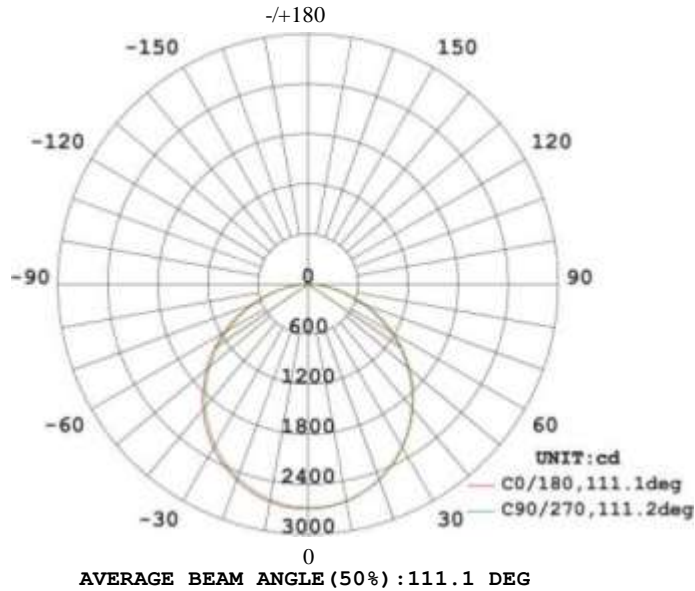
Rated Power	48W
Input Voltage	100-277VAC
Frequency	50 / 60 Hz
Power Factor	>0.9
Beam Angle	120°
CRI	£ 80
Dimming Function	0- 10 V
Operating Temperature	-30°Cto 45°C
Power Efficiency	>0.88

## DIMENSION

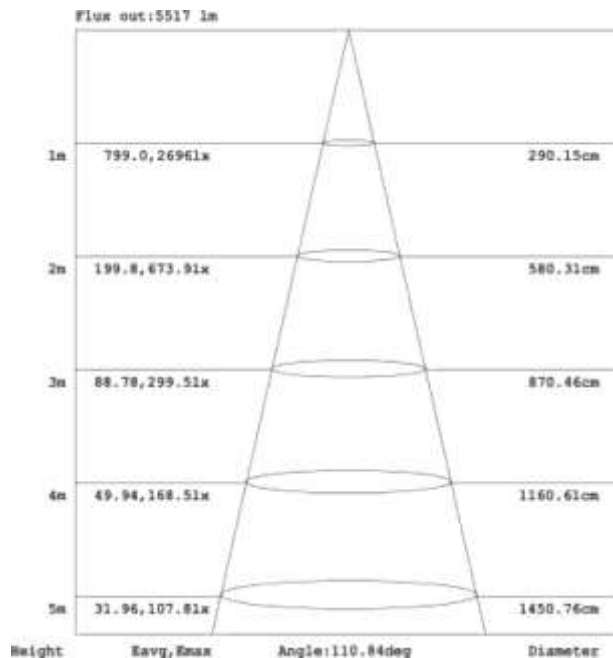


# PHOTOMETRIC DATA

## LUMINOUS INTENSITY DISTRIBUTION DIAGRAM



## DIAGRAM

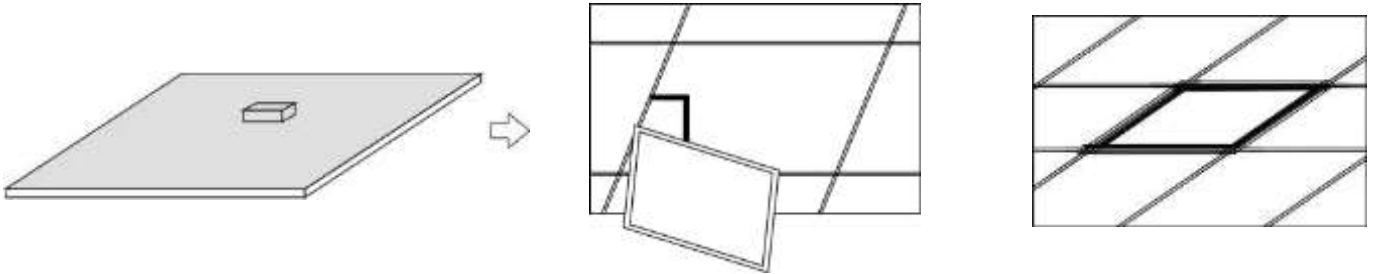


Note: The Curves indicate the illuminated area and the average illumination when the luminaire is at different distance.

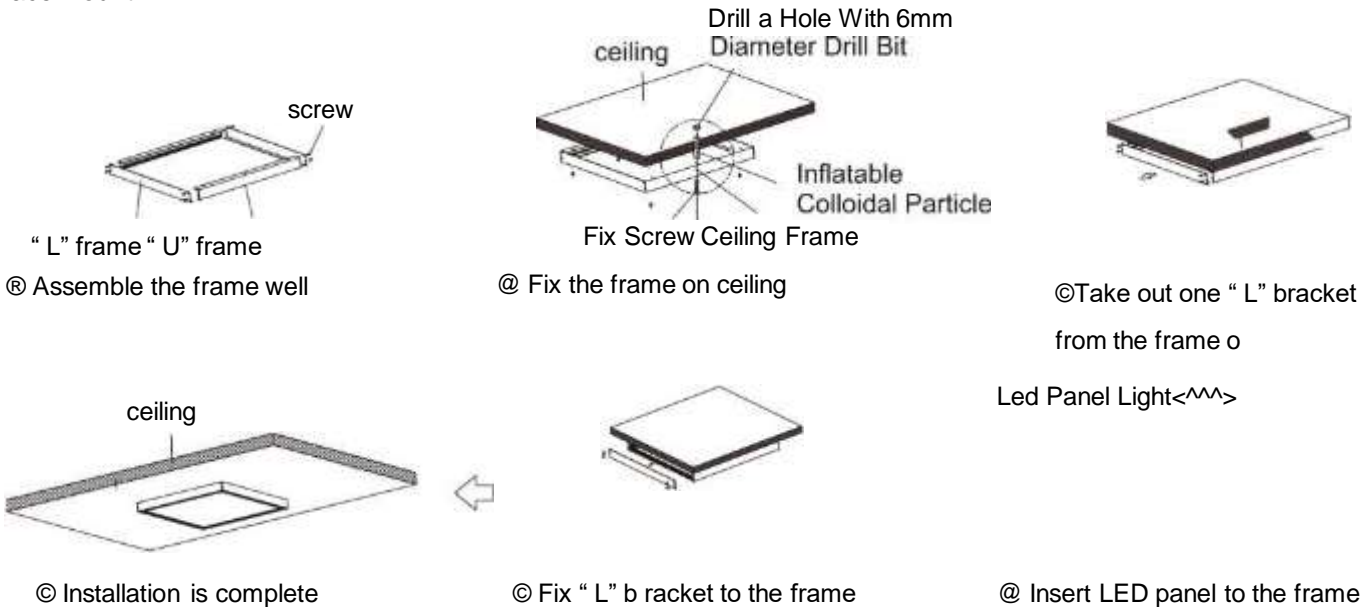
## INSTALLATION METHODS

### MOUNTING OPTION

#### Build-in



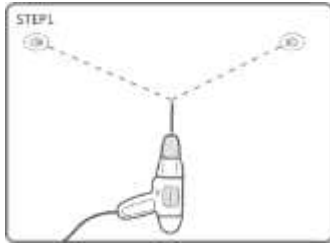
#### Surface Mount



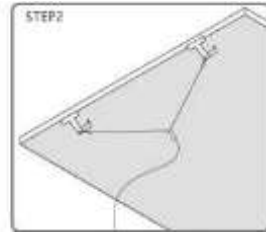
Please make sure the frame is assembled well before fixed on ceiling

## Suspended

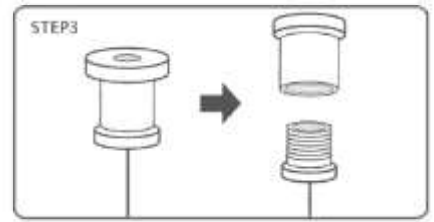
According to the width of the panel light, drill 2 mounting holes in the mounting position



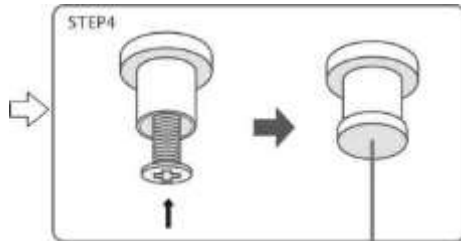
Button the panel light with the dog buckle of the equipped rope.



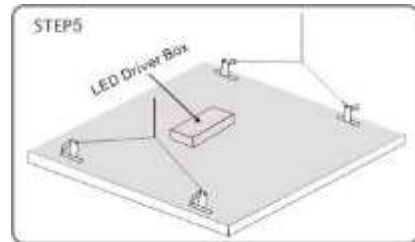
Twist off the rope grab device, and divide it into two parts: the upper cover and lower cover.



Fix the upper cover into prepared mounting holes with self-tapping screws (not included), and then twist on the lower cover.



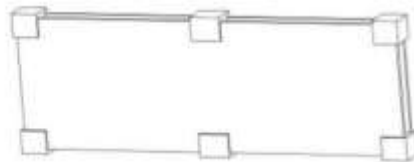
Connect LED panel light by the hook of suspension wire



## PACKAGING AND RENDERINGS



- \* UL Approved
- \* Output Current and Voltage 420-800mA 25V 48V
- \* Charging time: 24 Hours
- \* Illumination Time: 90 Minutes
- \* Selectable emergency power 10W, 15W, 20W



Item	N.W.	CARTON SIZE	Qty.	G.W.
2x4FT48W	14.99 lbs/pc	49.61" X25.59" X3.74"	2pcs/CTN	37.04 lbs/CTN