



DESCRIPTION

- 5 years warranty from the shipping date
- Will replace all the failed products due to design/production quality during warranty period
- Will bear all cost of maintains if the customer can help us to repair locally
- Don't have the responsibility to compensate for any incorrect installation or artificial damage
- Don't have the responsibility to compensate for damage occurred during the transit.

ADVANTAGE

- cETLus, DLC Premium
- CRI more than 80
- 0-10V dimmable driver
- Input voltage is AC100-277 V
- Reduces energy consumption upto60%.
- 5 years warranty
- Surface mounting installation
- Photocell sensor option
- Special indoor luminaire design

LOCATIONS

- Offices
- Warehouse
- Garage
- Shopping Mall
- School
- Other commercial applications

APPLICATIONS

- Offices
- Corridor

TECHNICAL DETAILS

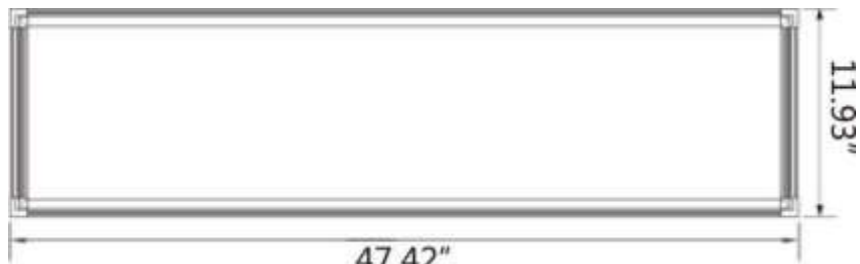
Product Number	Size	Power (W)	Dimensions	Color Temperature (K)	System Luminous Flux (lm)	System Efficacy (Lm/W)
DM-P71436W-40K-ZZ	1 x 4ft	36	47.42" x11.93" x0.47"	4000 K	4,680	130
DM-P71436W-50K-ZZ	1 x 4ft	36	47.42" x11.93" x0.47"	5000K	4,680	130

PHOTOMETRIC DATA

Rated Power	36W
Input Voltage	100-277VAC
Frequency	50 / 60 Hz
Power Factor	>0.9
Beam Angle	120°
CRI	£ 80
Dimming Function	0- 10 V
Operating Temperature	-30°Cto 45°C
Power Efficiency	>0.88

DIMENSION

front view

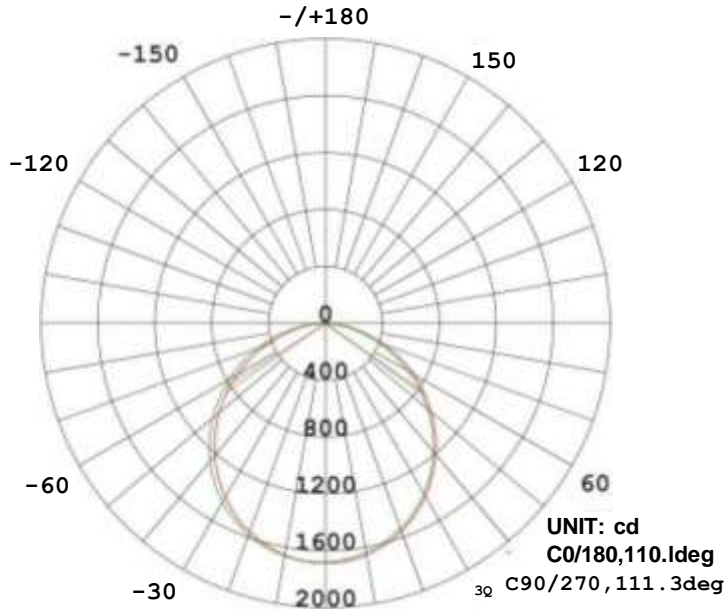


side view

1	1 ,
•J	CD -J

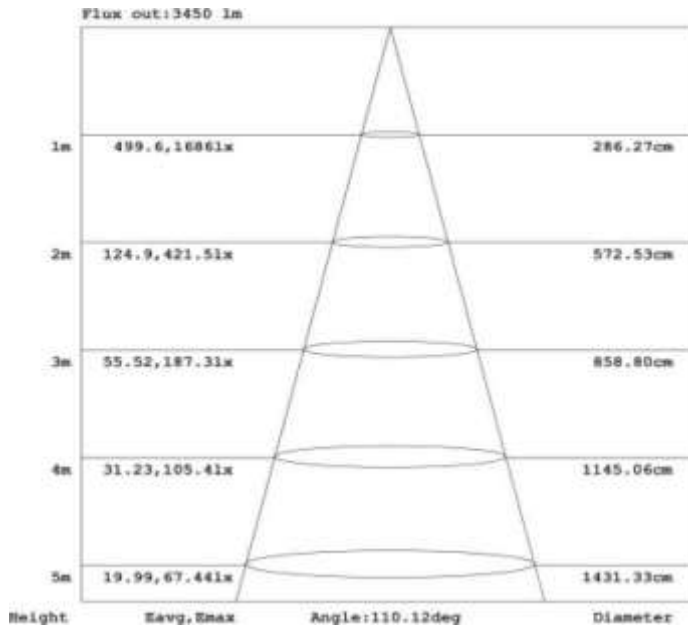
PHOTOMETRIC DATA

LUMINOUS INTENSITY DISTRIBUTION DIAGRAM



AVERAGE BEAM ANGLE(50%):110.7 DEG

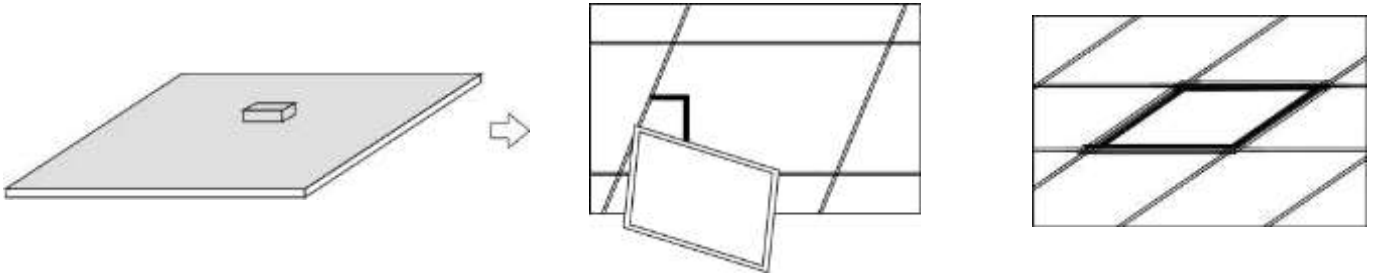
DIAGRAM



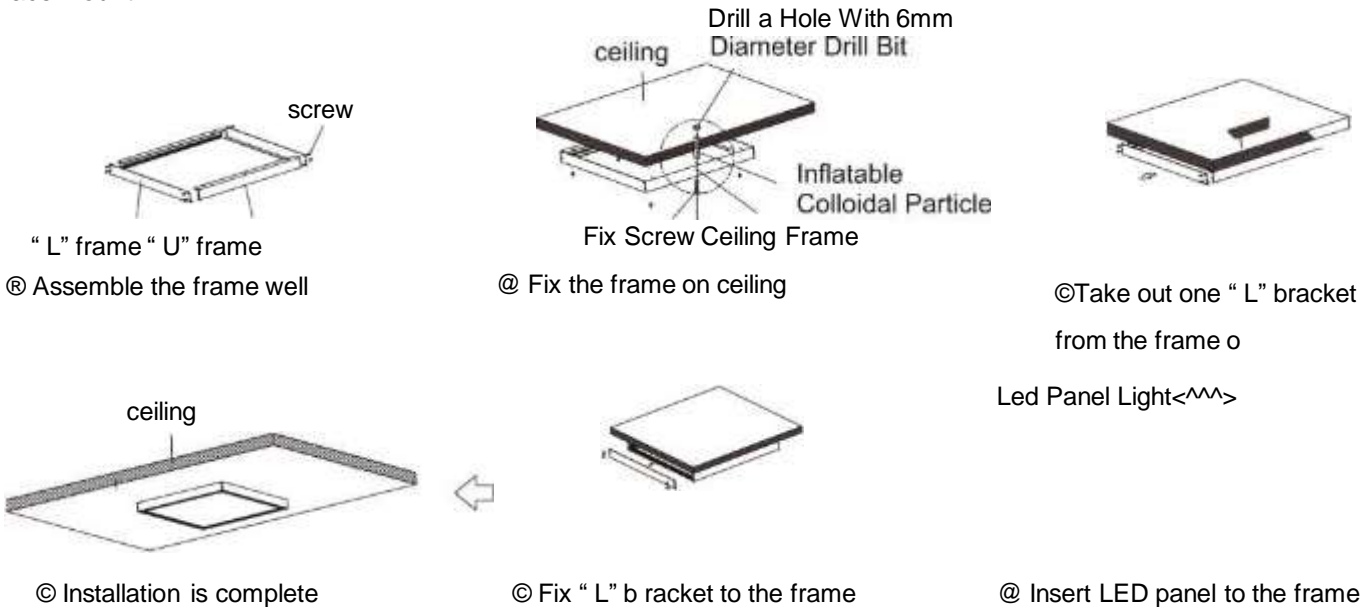
INSTALLATION METHODS

MOUNTING OPTION

Build-in



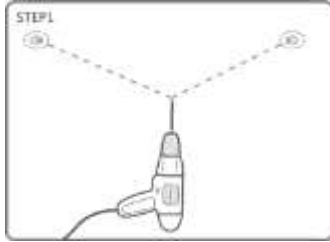
Surface Mount



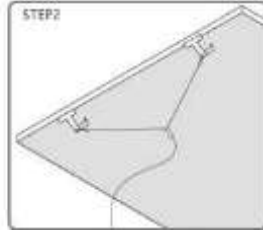
Please make sure the frame is assembled well before fixed on ceiling

Suspended

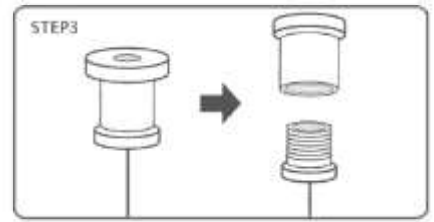
According to the width of the panel light, drill 2 mounting holes in the mounting position



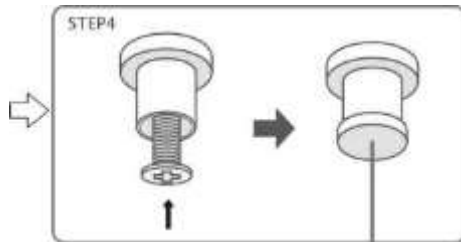
Button the panel light with the dog buckle of the equipped rope.



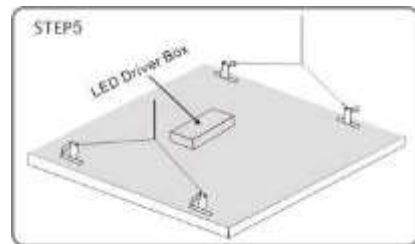
Twist off the rope grab device, and divide it into two parts: the upper cover and lower cover.



Fix the upper cover into prepared mounting holes with self-tapping screws (not included), and then twist on the lower cover.



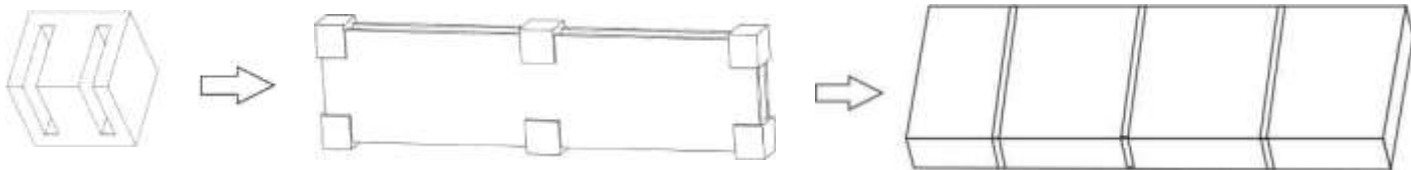
Connect LED panel light by the hook of suspension wire



PACKAGING AND RENDERINGS



- * UL Approved
- * Output Current and Voltage 420-800mA 25V 48V
- * Charging time: 24 Hours
- * Illumination Time: 90 Minutes
- * Selectable emergency power 10W,15W,20W



Item	N.W.	CARTON SIZE	Qty.	G.W.
1X4FT	8.16 lbs/pc	49.61" X13.78" x3.74"	2pcs/CTN	20.06 lbs/CTN