



APPLICATION

NLV Lighting Linear High Bay luminaires are designed for a wide variety of applications for use in warehouses, manufacturing, gyms, parking lots, and other industrial buildings. These fixtures are designed for 15 ft to 40 ft ceilings. The modular design has a full body construction with center driver housing made of Iron shell or Aluminum that provides durability and thermal control. All luminaires come with a diffused lens providing added protection and glare control. These fixtures are energy- efficient replacements for linear fluorescent and HID fixtures.

FEATURES

- High efficacy ≥ 200 lm/w
- Power Range: 65W to 320W
- Efficacy Range: 195 to 202 LM/W
- CCT Range: 4000K-5700K
- Operating Temperature: -40°C to 50°C
- Tier-1 LED suppliers; LM80 rated at CRI > 80
- Multiple 120V to 277V and 120V to 347V
 - 480V - available as option
- PF > 0.90 , THD $\leq 20\%$
- Multiple product sizes
- Emergency battery backup option
- Motion Sensing and Dimming
- Standard 5 Year warranty
- IP 64/65 driver for damp locations

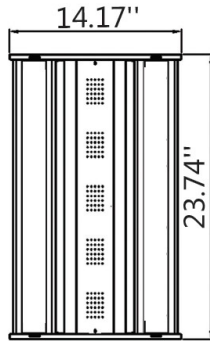
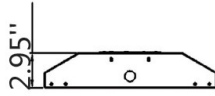
ORDERING GUIDE

Example: LHB-HEF-165W-50K-277V-200LPW-1X4-DSE-WH-XXX-XXX

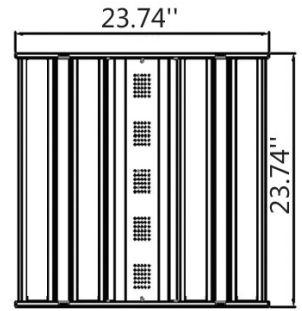
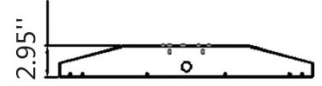
Color Temperature (K)	Input Voltage (V)	Size (ft)	Power (W)	Options
40K - 4000K 50K - 5000K 57K - 5700K	277V 120V – 277V 347V 120V – 347V 480V 120V – 480V	1 x 2	65	Dimming & Sensing DDM - Dimming DDS – Dimming + Sensing DDE – Dimming + Emergency DSE – Dimming + Sensing + Emergency Color WH –White CC –Custom Color Lens LCA - Clear Acrylic Lens LPA - Prismatic Acrylic Lens Optics General distribution Narrow, Medium, Wide, or Aisle
			80	
			100	
		1 x 4	80	
			100	
			130	
		2 x 2	100	
			200	
			200	
		2 x 4	240	
			240	
			320	

PHYSICAL DIMENSIONS

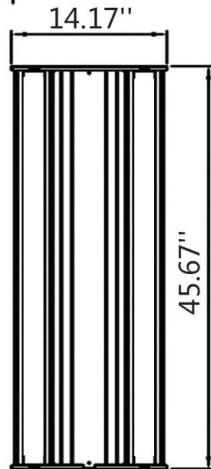
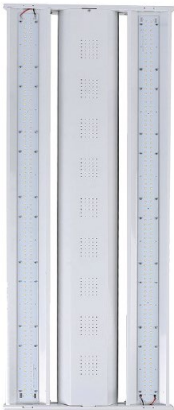
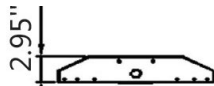
Size: 1 ft x 2 ft



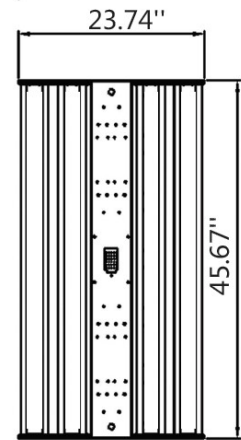
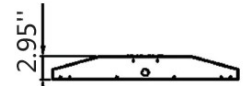
Size: 2 ft x 2 ft



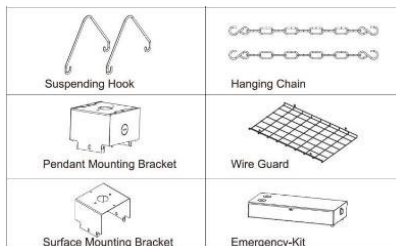
Size: 1 ft x 4 ft



Size: 2 ft x 4 ft



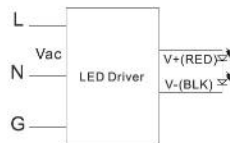
INSTALLATION ACCESSORIES



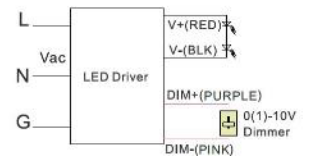
ELECTRICAL SCHEMATIC DIAGRAM

Without any function, 0(1)-10V Dimming wiring diagram

Without any function



0(1)-10V Dimmer

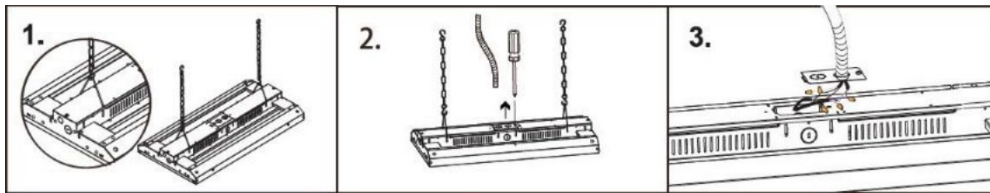


INSTALLATION - SAFETY NOTICE

The installation of these fixtures shall be done by licensed and qualified contractors only. NLV Lighting shall not held liable for any personnel or property damage.

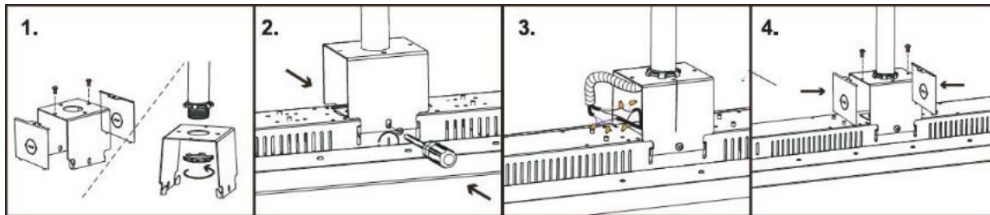
- Turn power off before inspection, installation, or removal.
- Properly ground all electrical enclosures.
- Follow local codes and all NEC codes.
- Use only UL or IEC approved Wires and other electrical accessories required.
- Check the supply voltage and protect the lighting circuit by 15 -20A circuit breaker.

INSTALLATION-HANGING CHAIN



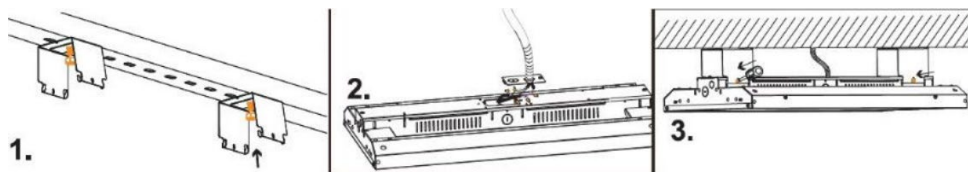
- Take out the lamp and installation accessories. (steel wire*2 / hanging chain*2).
- Buckle the steel wire on the chain, then let the steel wire clip into the hole of the power box at the back of the lamp.
- Hanging the chain on the suspending hook to complete the installation.

INSTALLATION- SCREW MOUNT



- Take out the lamp and installation accessories. (ceiling box/ circular pipe/ i-type bracket/ gasket I spring/ gasket/ nut*2 / screw*3) first fix the ceiling base on the wall with screws, then screw the circular pipe on the ceiling base, and then screw the nut on the circular pipe.
- First put the i- bracket on the circular pipe, then fixed with gasket/ spring gasket and nut.
- Stuck the lamp on the i-bracket to complete the installation.
- Align the studs of the side plate with the slots in the housing, set up the side plates, and fix them with screws.

INSTALLATION-CEILING MOUNT



- Take out the lamp and installation accessories. (i-type bracket/screw*4).
- Fix the i-bracket on the power supply with 4 screws.
- Assemble the lamp on the i-bracket to complete the installation.