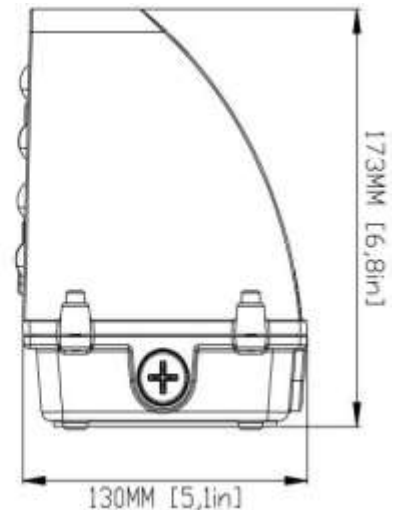
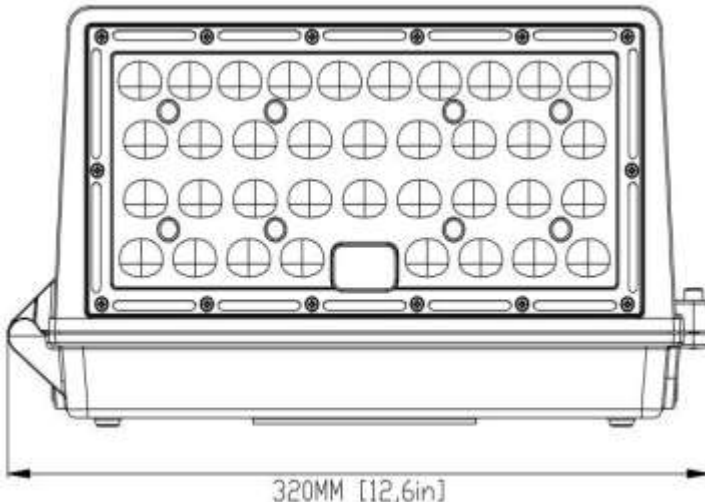




APPLICATIONS

This WPC2 Series Upgrade Full-Cutoff LED Wall Pack Light is designed for security lighting, it's widely used at pathway, hallway, perimeter, patio, entrance, stairway, house, garden, garage, yard, warehouse, factory, store, street, porch. With premium driver and Dust-to- Dawn photocell, this product lasts for 100000 hours and save up 80% on energy and operating costs. Inside with quality Lumileds LED as light sources, it's great solution to replace conventional fixtures.

DIMENSIONS



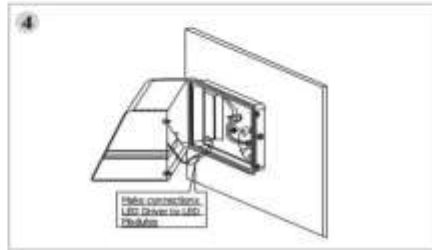
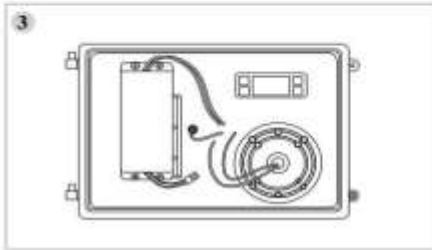
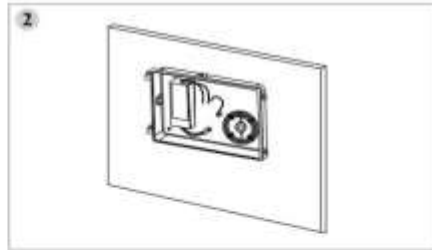
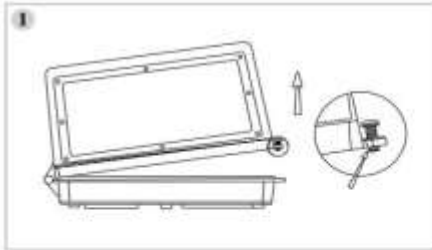
FEATURES

- Dusk-to-Dawn photocell available - Auto turn on at dusk and off at dawn
- Unique private slim shape design with solid durable construction
- Easy and fast installation - Direct mounting on wall or with J-Box
- High efficiency output - light efficiency is up to 120LPW
- Waterproof IP65 rating - suitable for all kinds of weather
- Good energy saving - save 80% electricity cost compared to traditional lamp
- 5 Years Warranty for whole fixture and power supply

GENERAL SPECIFICATION

Item No.	ML-WPC2-48W	ML-WPC2-60W	ML-WPC2-80W	ML-WPC2-100W
System Power(±5%)	42W	60W	80W	100W
Electrical Data				
Input Voltage	100-277 VAC			
LED Driver	MINGLIGHT Driver			
Power Frequency	50/60Hz			
Power Factor	>0.9			
THD	<20%			
Optical Data				
System Efficacy	120(±5%) Lm/W tested based on 5000K Ra70			
Luminous Flux (±5%)	5040LM	7200LM	9600LM	12000LM
LED Chip	Lumileds SMD3030			
Beam Angle	120°	110°	110°	110°
Light Color	3000K / 4000K / 5000K / 5700K			
CRI	>70 Ra			
UGR	<19			
Temperature Data				
IP Rate	IP65 wet/outdoor			
Operating Temp	-40° ~ 131° F (-40° ~ 55° C)			
Ambient Temp	-4° ~ 104° F (-20° ~ 40° C)			
Storage Temp	-40° ~ 158° F (-40° ~ 70° C) R.H.≤85%			
Lifespan	≥50000Hrs (Ta=30°C@L70) Operating			
Fixture Material	Die casting Aluminium body			
Safety Certification	ETL, DLC			
Warranty	5 Years			
Dimension & Packing Data				
Product size (LxWxH)	320 x 173 x 130mm (12,6" x 6,8" x 5,1")			
Net Weight	42W	60W	80W	100W
	2.5 KGS (5.51 LBS)	2.6 KGS (5.73 LBS)	2.7 KGS (5.95 LBS)	2.8 KGS (6.17 LBS)
Gross Weight	3.0 KGS	3.1 KGS	3.2 KGS	3.3 KGS
	(6.61 LBS)	(6.83 LBS)	(7.05 LBS)	(7.28 LBS)
Carton size (LxWxH)	35*23*18.5cm (13,78*9,06*7,28 inch)			
Qty/Carton	1 PC			
Loading Qty/20' GP	1300 CTNS / 1300 PCS			
Loading Qty/40' GP	2800 CTNS / 2800 PCS			
Loading Qty/40' HQ	3400 CTNS / 3400 PCS			
L.E.D. vs HPS / MH Equivalence				
LED	42W	60W	80W	100W
HPS / MH	150-200W	200-250W	300-350W	350-400W

INSTALLATION DIAGRAM



①.Remove 2 screws and lens cover

②.Knock out appropriate hole, Apply the gasket on the back

③.Connect the power wiring

④.Tighten the silicone seal, then Connect LED driver and LED module Fix the lens by screws

TECHNICAL SPECIFICATIONS

#Certificate

RoHS approved

This product is tested by independent lab. with all green material.

CE / ETL / DLC approved

This product have passed CE & ETL testing and is fully DLC approved.

IESNA LM-79 and LM-80 Testing

Minglight fixture have been tested by independent lab. in accordance with IESNA LM-79 and LM-80 Testing

Color Stability:

LED color temperature is warranted to shift no more than 200K in CCT over a 50000 hours.

Color Uniformity:

Minglight's range of CCT follows the guidelines of the American National standard for specification for the chromaticity of Solid State Lighting (SSL) Products, ANSI C78.377-2017

#Installation

IES Classification:

110° beam angles, the lighting output produces a oval shape distribution to cover the area.

Mounting:

This product is direct mounting on wall mounting or with J-box The application including Warehouse, patio, entrance, stairway, house, Garage, outdoor facilities.

#LED

Characteristics

Lifespan

100000 hours LED lifespan based on IES LM-80 results and TM-21 Calculation. **Smart Sensor**

Color Consistency

7-step MacAdam Ellipse binning to achieve consistent one by one color.

#Smart

Engine

Dimming

Driver

1-10V Dimming
optional
Photocell
optional


#IP Rating

Ingress Protection rating of IP65 IP65 for dust and water

Greenity:

Mercury or UV free. RoHS compliant components. Package boxes are made with recyclable material.

#SMART SOLUTION OPTIONS

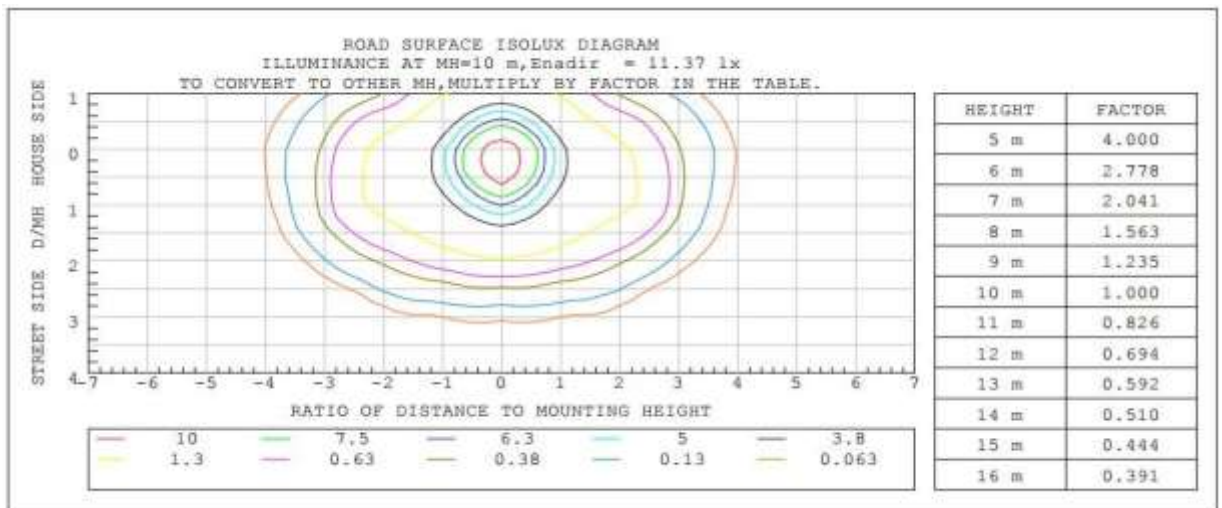
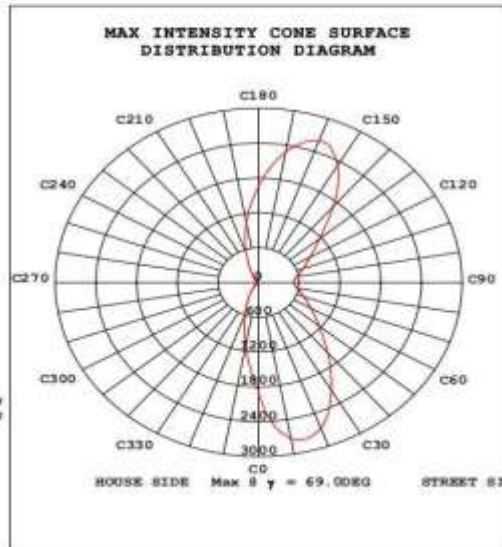
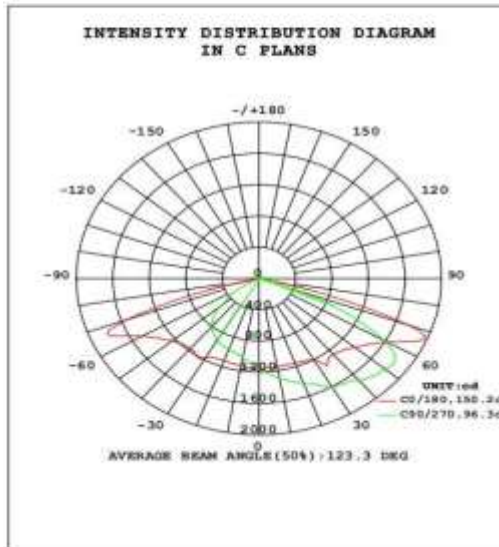
Description	Picture	Function
Photocell		Auto turn on at dusk/night and off at dawn/daytime

#TROUBLE SHOOTING

Problem	Possible Cause	Solutions
LEDs stop working	The power line is improperly connected.	Reconnect the power cable.
	The power plug is loose.	Firmly plug the power in.
	The LED driver malfunctions.	Replace with new driver.
	The LED chip is damaged.	Replace with new LEDs.
LEDs flash on and off	The output of the driver is abnormal.	Replace with new driver.
	The LED chip breaks down.	Replace with new LED chip.

PHOTOMETRICS

DATA OF LAMP		PHOTOMETRIC DATA Eff: 123.88 lm/W			
MODEL	WPC2-42W-5000k	I _{max} (cd)	2600	η street_up (%)	0.6
NOMINAL POWER (W)	100	LOR (%)	100.0	η street_down (%)	66.0
RATED VOLTAGE (V)	277	TOTAL FLUX (lm)	5190	η house_up (%)	1.1
NOMINAL FLUX (lm)	5190.5	MAXIMUM θ (C, γ)	158,69.0	η house_down (%)	32.3
LAMPS INSIDE	1	η up (%)	1.7	76 FLASHAREA (m2)	0.05000
TEST VOLTAGE (V)	220	η down (%)	98.3	SLI	19.470



Suggested mounting height for best illumination effect: 6 to 13 feet (2 - 4 meters)