



## APPLICATIONS

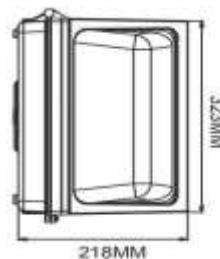
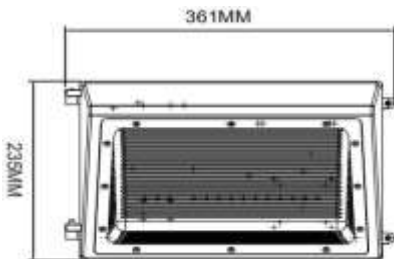
This WPB Series Classic LED Wall Pack Light is designed for security lighting, it's widely used at pathway, hallway, perimeter, patio, entrance, stairway, house, garden, garage, yard, warehouse, factory, store, street, porch. With premium driver and Dust-to-Dawn photocell, this product lasts for 100000 hours and save up 80% on energy and operating costs. Inside with quality Lumileds LED as light sources, it's great solution to replace conventional fixtures.

**Wall Pack is widely used in pathway, hallway, perimeter, patio, entrance, stairway, house, garden, garage, yard, warehouse, factory, store, street, porch.**

## FEATURES

- Dusk-to-Dawn photocell available - Auto turn on at dusk and off at dawn
- Unique private classic design with solid durable construction
- Easy and fast installation - Direct mounting on wall or with J-Box
- PC lens and GLASS lens both available to meet different application
- Waterproof IP65 rating - suitable for all kinds of weather
- Good energy saving - save 80% electricity cost compared to traditional lamp
- 5 Years Warranty for whole fixture and power supply

## DIMENSIONS

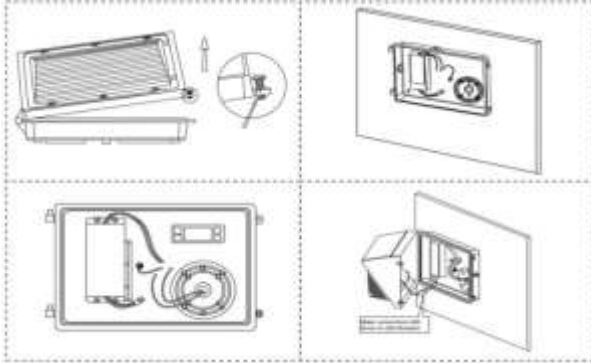


## PC Lens Size

## GENERAL SPECIFICATION


<b>Item No.</b>	<b>ML-WPB-48W, 60W, 80W, 100W, 130W</b>				
<b>System Power(±5%)</b>	48W 60W 80W 100W 130W				
<b>Electrical Data</b>					
<b>Input Voltage</b>	100-277 VAC				
<b>LED Driver</b>	MINGLIGHT Driver				
<b>Power Frequency</b>	50/60Hz				
<b>Power Factor</b>	>0.9				
<b>THD</b>	<20%				
<b>Optical Data</b>					
<b>System Efficacy</b>	110(±5%) Lm/W tested based on 5000K Ra70				
<b>LED Chip</b>	Lumileds SMD3030				
<b>Beam Angle</b>	110°				
<b>Light Color</b>	3000K / 4000K / 5000K / 5700K				
<b>CRI</b>	>70 Ra				
<b>UGR</b>	<19				
<b>Temperature Data</b>					
<b>IP Rate</b>	IP65 wet/outdoor				
<b>Operating Temp</b>	-40° ~ 131° F (-40° ~ 55° C)				
<b>Ambient Temp</b>	-4° ~ 104° F (-20° ~ 40° C)				
<b>Storage Temp</b>	-40° ~ 158° F (-40° ~ 70° C) R.H.≤85%				
<b>Lifespan</b>	≥50000Hrs (Ta=30°C@L70) Operating				
<b>Fixture Material</b>	Die casting Aluminum body				
<b>Safety Certification</b>	ETL, DLC				
<b>Warranty</b>	5 Years				
<b>Dimension &amp; Packing Data</b>					
<b>Product size (LxWxH)</b>	361 x 235 x 187mm (14,2" x 9,3" x 7,36")				
<b>Net Weight</b>	3.0 KGS (6.61 LBS)				
<b>Gross Weight</b>	3.5 KGS (7.72 LBS)				
<b>Carton size (LxWxH)</b>	39*27*24.5cm ( 15,35*10,63*9,65 inch)				
<b>Qty/Carton</b>	1 PC				
<b>Loading Qty/20' GP</b>	800 CTNS / 800 PCS				
<b>Loading Qty/40' GP</b>	1600 CTNS / 1600 PCS				
<b>Loading Qty/40' HQ</b>	2000 CTNS / 2000 PCS				
	<b>48W</b>	<b>60W</b>	<b>80W</b>	<b>100W</b>	<b>130W</b>
<b>Luminous Flux (±5%)</b>	5280LM	6600LM	8800LM	11000LM	14300LM
<b>HPS / MH</b>	<b>150-200W</b>	<b>250-300W</b>	<b>300-350W</b>	<b>350-400W</b>	<b>400-500W</b>

## INSTALLATION DIAGRAM



- ①.Remove 2 screws and lens cover
- ②.Knock out appropriate hole, Apply the gasket on the back
- ③.Connect the power wiring
- ④.Tighten the module Fix the lens by screws silicone seal, then Connect LED driver and LED .

## #SMART SOLUTION OPTIONS

Description	Picture	Function
<b>Photocell</b>		Auto turn on at dusk/night and off at dawn/daytime

## #TROUBLE SHOOTING

Problem	Possible Cause	Solutions
LEDs stop working	The power line is improperly connected.	Reconnect the power cable.
	The power plug is loose.	Firmly plug the power in.
	The LED driver malfunctions.	Replace with new driver.
	The LED chip is damaged.	Replace with new LEDs.
LEDs flash on and off	The output of the driver is abnormal.	Replace with new driver.
	The LED chip breaks down.	Replace with new LED chip.

## TECHNICAL SPECIFICATIONS

### #Certificate

#### **RoHS approved**

This product is tested by independent lab. with all green material.

#### **CE / ETL / DLC approved**

This product have passed CE & ETL testing and is fully DLC approved.

#### **IESNA LM-79 and LM-80 Testing**

Minglight fixture have been tested by independent lab. in accordance with IESNA LM-79 and LM-80 Testing

### #LED Characteristics

#### **Lifespan**

100000 hours LED lifespan based on

IES LM-80 results and TM-21 Calculation.

#### **Color Consistency**

7-step MacAdam Ellipse binning to achieve consistent one by one color.

#### **Color Stability:**

LED color temperature is warranted to shift no more than 200K in CCT over a 50000 hours.

#### **Color Uniformity:**

Minglight's range of CCT follows the guidelines of the American National standard for specification for the chromaticity of Solid State Lighting (SSL) Products, ANSI C78.377-2017

### #Smart Engine

#### **Dimming Driver**

1-10V Dimming optional

#### **Smart Sensor**

Photocell optional

### #Installation

#### **IES Classification:**

110° beam angles, the lighting output produces a oval shape distribution to cover the area.

#### **Mounting:**

This product is direct mounting on wall mounting or with J-box  
The application including Warehouse, patio, entrance, stairway, house, Garage, outdoor facilities.

### #IP Rating

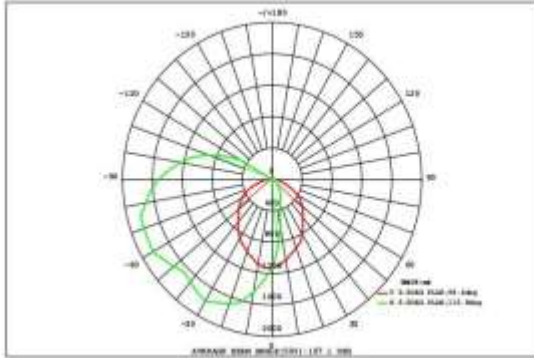
Ingress Protection rating of IP65

IP65 for dust and water

#### **Greenity:**

Mercury or UV free. RoHS compliant components. Package boxes are made with recyclable material.

**PHOTOMETRICS**



DATA OF LAMP		Eff:111.76lm/W	
MODEL	ML-WPB-48W	Imax (cd)	1859
NOMINAL POWER (W)	48	AVAILABILITY (%)	96.5
RATED VOLTAGE (V)	277	Avai. FLUX (lm)	5120
NOMINAL FLUX (lm)	5308.57	LOR (%)	100.0
LAMPS INSIDE	1	TOTAL FLUX (lm)	5309
TEST VOLTAGE (V)	230	θ @50% (H,V)	98,116DEG

